

# Lighting guide

## Spot Small



# Introduction

The Profoto Spot Small is an optical spot modifier designed for precise light control, making it an essential tool for professional fashion, portrait, product, and fine art photography.

Unlike softboxes or Fresnels, a projection spot focuses light into a defined beam with adjustable edges and creative shaping tools like gobos and an iris diaphragm.

This guide explores how to use the Spot Small to achieve unique lighting effects with complete creative control.



# A breakdown of the Spot Small

## Magnetic Front Mount

Compatible with Profoto Clic light shaping tools for added versatility.



## Cooling & Durability

A 360 vented housing keeps it cool for continuous use in high-demand shoots.

## Modular Design

Works with gobos, an iris, and built-in adjustable leaves to shape and control light.



## Precision Optics

Features a 115mm high-quality achromatic lens for sharp projection without artifacts.





# Hard-edged light & defined shadows

A tightly focused beam creates razor-sharp edges, ideal for dramatic portraits, product photography, and editorial work. Achieved by fully focusing the Spot Small's lens and keeping the light source at a distance.

## Potential use cases:

Bold fashion portraits, cinematic stills, and technical product photography.



# Soft-edged light & gradient shadows

By slightly defocusing the lens and/or adding a Clic Dome, you can soften edges while maintaining light directionality.

Ideal for beauty photography where controlled softness is needed without losing contrast.

Potential use cases:

Beauty shots, editorial portraits, fine art photography.



# Patterned light with Gobos

Insert a Gobo (metal cutout) in the Gobo holder to project textures or patterns onto the background or subject.

Use different gobos to mimic window light, tree shadows, abstract shapes, or grids.

Potential use cases:

Cinematic portraits, backgrounds, conceptual fashion, and moody commercial work.



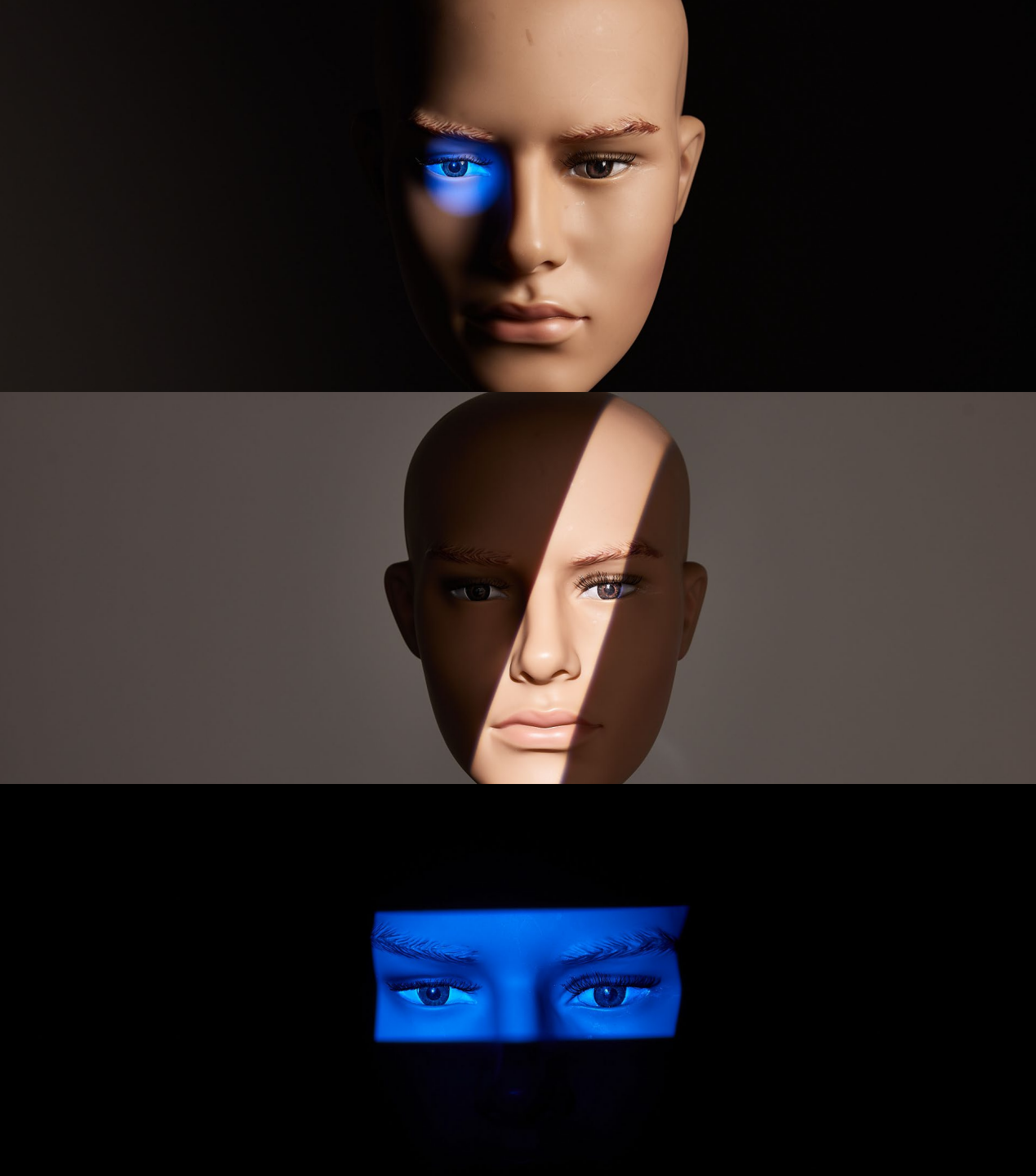
# Spotlight effect & subject isolation

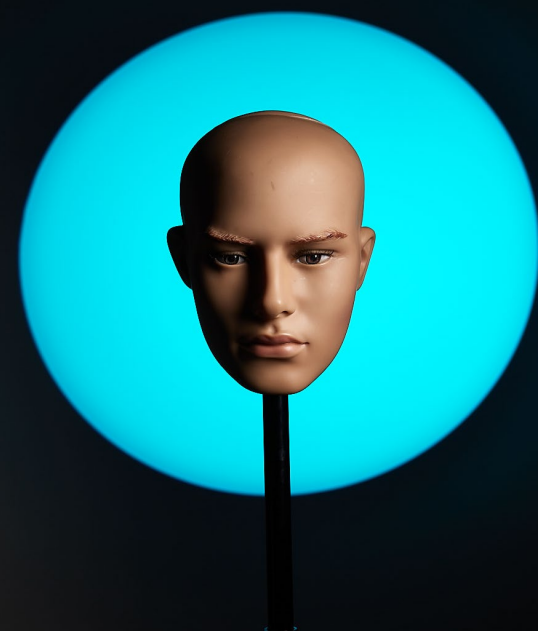
Creates a theatre-style spotlight to draw attention to a subject. This can easily be achieved with the help of the iris and the integrated leaves.

Works well with black or coloured backdrops to create a high-impact, professional look.

Potential use cases:

Solo performers, actor headshots, product showcases.





# Colored lighting effects

Use colored gels with gobos for layered light effects in fashion or experimental photography.

Perfect for modern beauty campaigns and futuristic editorial shoots.

## Potential use cases:

Color-rich creative fashion, commercial product photography.





# Simulating sun light

A gobo mimicking window, blinds or tree branches can create a realistic daylight effect.

Adjust distance and focus and adding Clic CTO Gels to replicate different times of day (sharp noon light vs. soft afternoon glow).

Potential use cases:

Portraits with a natural feel, editorial lifestyle photography.



# Creative background effects

Use the Spot Small with Gobos to project textures onto backdrops for cinematic storytelling. Add Clic color gels to blend hues and create gradients.

## Potential use cases:

Theatrical portraits, advertising campaigns, avant-garde fashion.

